

Children's Urology Associates, P.A.

*Rafael Gosalbez, M.D., FAAP

*Andrew Labbie, M.D., FAAP

*Kristen Kozakowski, M.D.

*Miguel Castellan, M.D.

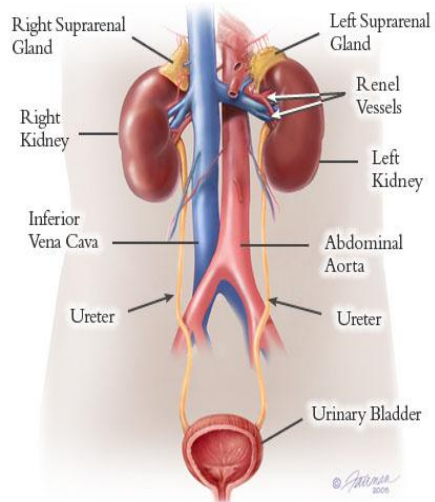
Pediatric and Reconstructive
Urology

*Kevin Olson, PA-C

*Rigoberto Acosta, PA-C

*Juddie M. Munar, MSN, ARNP

*Natalie Hunter, MSN, ARNP



Our locations:



**Medical Arts Building
3200 SW 60th Court
Suite 104
Miami, Florida 33155
305-669-6448**



**Professional Centre at
Pembroke Lakes Mall
700 N. Hiatus Road
Suite 216
Pembroke Pines, Florida 33026
954-433-5300**

A Guide to:

*Semen Analysis
Collection*



Definition:

What is being tested?

A semen analysis measures the quantity and quality of both the liquid portion, called semen, and the microscopic, moving cells, called sperm.

Semen is the turbid, whitish substance that is released from the penis during ejaculation. Sperm are the cells in semen with a head and a tail that enables them to travel to the egg.

The Collection:

At a laboratory site:

Most labs require samples to be collected on-site. Semen is collected in a private area, usually a bathroom. The man masturbates and collects the semen in a sterile container.

The semen must be examined within one hour after ejaculation.

At home:

If collection is done at home, the sample should be collected in a sterile container and kept at room temperature (70°F/21°C) at all times. Keep the sample out of direct sunlight. Never refrigerate the sample or try to warm it to body temperature. ***The semen must be examined within one hour after ejaculation.***

Testing Facilities:

Miami-Dade:

Ⓢ Baptist Hospital of Miami
8900 North Kendall Drive
Miami, Florida 33176
Phone: 786-596-6522
Hours: Mon-Fri: before 1:30pm

Ⓢ Palmetto General Hospital
2001 SW 68th Street
Hialeah, FL 33016
Main: 305-823-5000
Lab: 305-364-2133
***Specimen Drop-off only**
Hours: Tues-Fri: 6:30am
***Must pre-register the day before**

Broward:

Ⓢ LabCorp:
4200 North 29th Avenue
Hollywood, FL 33020
Phone: 954-342-4789
Hours: Mon-Fri: 11am-4pm

Ⓢ West Boca Medical Center
21644 State Rd 7
Boca Raton, FL 33428
Phone:

***By appointment only**

Important Points:

***It is imperative to abstain from ejaculation 3-5 days prior to semen collection. Engaging in activities that result in ejaculation may provide false analysis results.**

***If the initial analysis reveals abnormal levels, we will repeat the semen analysis in 3 months, to ensure the most accurate results.**

***The specimen may take up to 5 days for processing. You may call our office after this time period for the results.**